



**CEVAHİR**

**GROWTH IS NEVER BY CHANCE,  
IT IS THE RESULT OF FORCES WORKING**

**CEVAHIR**

## ABOUT US

Cevahir is a constantly growing company which operates in many industries including finance, mining and security; with the main focus on construction, tourism and business.

The company started its businesses in the construction sector by the founder and the present chairman Ibrahim Cevahir. With the vision of growth by development, development by growth, the Cevahir Limited Partnership was formed in 1967. As a group company, construction and contracting activities were exhibited in various developments and infrastructure areas such as schools, hospitals, water & sewerage networks, and bridges. Project obligations have been successfully completed and the company has gained national confidence and international reputation. Thanks to gained success, the Libya Construction and Trade Consortium was established in 1975 and the company expanded abroad. After the success of the Company in Libya in 1978, Cevahirler İnşaat ve Taahhüt Limited company was established to start construction and contracting works in Saudi Arabia which led to many successful projects.

With the accumulated experience of the company, work completion ability and with its wide capacity, it started to finance and develop its own projects in 1990. In addition to mainly tourism-oriented project developments, the company continued to prove their success in new sectors. It started to operate in the fields of tourism and hotel management with the 'The Plaza Hotel', which was an investment completed in 1995. Apart from these, the company has taken its place in the service sector with its commercial and office investments, and in the mining sector with its investment in perlite production facility. It has become one of the leading companies in Turkey with worldwide recognition by realizing all phases of a project including operations and marketing. With our mission aiming to break new grounds, we have successfully completed many firsts as a company, from the biggest shopping and indoor entertainment center of its time in Europe, to the largest ballroom and convention hotel in Turkey, and the highest towers in Macedonia. With a total construction area of 280,000 square meters, our investment in Macedonia has become the largest private sector investment from Turkey in the Balkan region.

Cevahir is an exemplary company above world standards who is reliable, up to date and brave. In its project designs Cevahir aims to be in accordance with the spirit of the location and continue its activities by putting people at the center of its business.



IBRAHİM CEVAHIR  
OUR FOUNDER AND HONORARY PRESIDENT  
1933 Trabzon – September 22, 2015 Istanbul

## BOARD OF DIRECTORS



**Yusuf Cevahir**  
Chairman of the  
Board



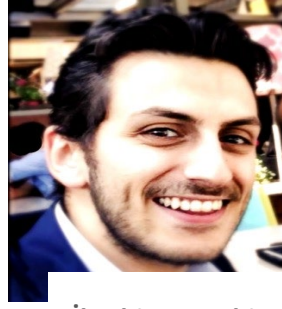
**Hamit Cevahir**  
Vice Chairman of  
the Board



**Eser Cevahir**  
Board Member



**Muhammed  
Cevahir**  
Board Member



**İbrahim Cevahir**  
Board Member



**DON'T LIMIT YOURSELF.**

**MANY PEOPLE LIMIT THEMSELVES TO WHAT THEY THINK THEY CAN DO. YOU CAN GO AS FAR AS YOUR MIND LETS YOU. REMEMBER, YOU CAN ACHIEVE WHAT YOU BELIEVE. EVERY SINGLE JOB IS A CHALLENGE, DOING THE BEST AT THIS MOMENT PUTS YOU IN THE BEST PLACE FOR THE NEXT ONE.**

**INVESTMENTS  
IN TURKEY**

## ISTANBUL CEVAHIR SHOPPING MALL

Completed in 2005 with a total construction area of 425,000m<sup>2</sup> over 10 floors and a capacity of 500,000 visitors, Cevahir Shopping Mall was the largest shopping Mall of Turkey and Europe, and was the 3rd largest shopping mall in the World.

In addition to providing easy access to the Istanbul Metro, the shopping center's amenities also include:

- More than 360 shops, 34 fast food units, 14 restaurants
- 22,000m<sup>2</sup> entertainment area, including a large roller coaster, many rides, arcade and children's play area
- 9,000m<sup>2</sup> movie complex including 13 movie theatres and a theatre hall belonging to the Istanbul State Theatres
- A parking complex with a capacity of 3,000 vehicles
- 60m<sup>2</sup> elevating hydraulic stage reaching a height of 25 meters which can be watched from all floors
- The world's largest clock
- 2,500m<sup>2</sup> glass roof
- Two 15 meter waterfalls



**LOCATION**  
ŞİŞLİ, İSTANBUL

**SCOPE**  
SHOPPING  
MALL

**TOTAL AREA**  
425,000m<sup>2</sup>

**DATE OF  
COMPLETION**  
OCTOBER 2005











## TRABZON CEVAHIR OUTLET

A mixed-use facility which consists of a 33,000m<sup>2</sup> shopping outlet, with 10,000m<sup>2</sup> of additional outlet space planned for further expansion, and an 8,000m<sup>2</sup> office block.

The facility serves both for the residents of Trabzon and visitors from neighboring cities in the Black Sea Region.



**LOCATION**  
YOMRA, TRABZON

**SCOPE**  
SHOPPING  
OUTLET  
AND OFFICE  
BLOCK

**TOTAL AREA**  
51,000m<sup>2</sup>

**DATE OF  
COMPLETION**  
MAY 2011

# KOTON OUTLET

# YIKKI OUTLET

## TRABZON CEVAHİR OUTLET

### 1. KAT



- |                          |                                 |
|--------------------------|---------------------------------|
| 2.01 KILAS               | 2.04 BERG                       |
| 2.02 ALPTEPEZİ GİYSİLERİ | 2.05 TOSKAN                     |
| 2.03 BİTİRİN BİZEKİ      | 2.06 ALANBY                     |
| 2.04 KAPIN OUPLET        | 2.07 KİM TİM BİZEKİ AKSESUARLAR |
| 2.05 TİM OUPLET          | 2.08 FİBRİKA & BİZEKİ           |
| 2.06 İKİ YILDIZ          | 2.09 NİNE FİLAZ                 |
| 2.07 LÜNKANCI            | 2.10 TİRENOVA                   |

### 2. KAT

- |                |                            |
|----------------|----------------------------|
| BURBER KING    | TATILAN ÇAYIRI & HİPPISTAY |
| LAFFI DÖNME    | MATIL DÖNME & DÜNYALIK     |
| TOSKAN         | TOSKAN                     |
| BURBER DÖNME   | BATIM DÖNME                |
| PARADIZI FİLAZ | BAKİ BİLGE                 |
| TRICOLE        | 32 ADIY                    |
|                | PLATINUM                   |

### 3. KAT

- |                 |              |
|-----------------|--------------|
| PUR             | LÜNKANCI     |
| PERVAL TOSKAN   | YERLİK       |
| MAİL ALANBY     | BİZEKİ       |
| 32 ADIY         | BAKİ         |
| BATIM OUTLET    | 1 & 2 OUTLET |
| ADINA           |              |
| PLATINUM OUTLET |              |





CEVAHİR KAHVE

BEYMEN  
BUSINESS

50  
İNDİRİM

K&T

## GRAND CEVAHIR HOTEL CONVENTION CENTER

The 5-star luxurious Grand Cevahir Hotel Convention Center was the first and largest convention hotel in Turkey and provides 324 rooms including 4 presidential suites, 7 executive corner suites, 4 non-smoking suites, 36 corner suites, 269 standard rooms and 3 rooms adapted for the disabled.

The Grand Cevahir Hotel Convention Center which contains Europe's largest congress hall, offers many services with its amenities which include:

- A fair ground of 10,000m<sup>2</sup>
- 2,500m<sup>2</sup> column free ballroom with 310m<sup>2</sup> stage and an 8.65 meters floor to ceiling height making it one of the largest in Europe
- Auditorium with a capacity of 1,013 guests
- 8 meeting rooms
- Indoor and outdoor swimming pools



**LOCATION**  
ŞİŞLİ, İSTANBUL

**SCOPE**  
CONGRESS HOTEL

**TOTAL AREA**  
110,000m<sup>2</sup>

**NUMBER  
OF ROOMS**  
324

**DATE OF  
COMPLETION**  
MAY 2002

















## CEVAHIR HOTEL ASIA

A modern hotel with 198 rooms which offers an unparalleled Prince Islands view.

The hotel offers privileged and exclusive accommodation facilities, 8 prestigious meeting Rooms of up to 90m<sup>2</sup> and a ballroom of 650m<sup>2</sup> with a 560 person banquet seating capacity, making the hotel highly sought after for its wedding venues and facilities.

In addition to its outdoor swimming pool and modern fitness center, the hotel has an emphasis on its 1,350m<sup>2</sup> SPA Health Center which includes massage rooms, snow fountain, steam room, jacuzzi, sauna, Turkish bath and indoor swimming pool.



**LOCATION**  
MALTEPE,  
ISTANBUL

**SCOPE**  
HOTEL AND SPA

**TOTAL AREA**  
21,000m<sup>2</sup>

**NUMBER  
OF ROOMS**  
198

**DATE OF  
COMPLETION**  
OCTOBER 2013



CİVAHİR HOTEL









## THE PLAZA HOTEL

Located in central Istanbul, this 5-star hotel provides guests the opportunity to live the metropolitan life in the most comfortable way, with its ideal location near the main roads, banks, hospitals, shopping and art centers.

The hotel has 235 rooms that include 6 king rooms, 2 honeymoon suites, 44 club rooms, 16 junior suites, 2 rooms with disabled facilities, 22 executive rooms, 142 standard rooms and 1 apartment room.

In addition to its 12 meeting rooms, sports & recreational facilities and restaurants, the hotel has stunning views of the Bosphorus.



**LOCATION**  
BALMUMCU,  
ISTANBUL

**SCOPE**  
HOTEL AND  
BUSINESS CENTER

**TOTAL AREA**  
26,000m<sup>2</sup>

**NUMBER  
OF ROOMS**  
235

**DATE  
OF COMPLETION**  
APRIL 1995







## **CEVAHIR SULTANAHMET HOTEL**

Located in the historical and prime touristic area of Sultanahmet, this 36 room boutique hotel is within a few minutes walking distance from Istanbul's landmarks including Topkapı Palace, the Blue Mosque, the Hagia Sophia and much more.

With its neoclassical architecture suiting the nature of its surroundings, the hotel gives guests the chance to experience the nostalgia of centuries.



**LOCATION**  
SULTANAHMET,  
ISTANBUL

**SCOPE**  
HOTEL

**TOTAL AREA**  
4,000m<sup>2</sup>

**NUMBER  
OF ROOMS**  
36

**DATE OF  
COMPLETION**  
SEPTEMBER 2004





## TARABYA ÇAMLICA VILLAS

Completed in 1992, this is a 60,000m<sup>2</sup> residential complex located in one of Istanbul's most luxurious residential areas, Tarabya.

The complex consists of 110 triplex villas in which residents can benefit from a secluded lifestyle and many shared facilities including swimming pools.



**LOCATION**  
TARABYA,  
ISTANBUL

**SCOPE**  
VILLAS

**TOTAL AREA**  
60,000M<sup>2</sup>

**NUMBER  
OF UNITS**  
110

**DATE OF  
COMPLETION**  
MAY 1992



## **CEVAHİR ŞİŞLİ OFFICE BUILDING**

A 15-floor office block built to provide exclusive facilities and Grade A office spaces in the heart of Istanbul's busy financial district, Şişli.



**LOCATION**  
ŞİŞLİ,  
İSTANBUL

**SCOPE**  
OFFICE

**TOTAL AREA**  
6,000M2

**NUMBER  
OF FLOORS**  
15

**DATE OF  
COMPLETION**  
MARCH 2006

## **CEVAHIR RESIDENTIAL COMPLEX AND MERTER BUSINESS CENTER**

A residential and business complex of 36,500m<sup>2</sup>, consisting of 9 apartment blocks and 2 commercial buildings with 8,500m<sup>2</sup> Grade A office space. This complex is located in Merter, the textile center of Istanbul.



**LOCATION**  
MERTER,  
ISTANBUL

**SCOPE**  
OFFICE AND  
RESIDENTIAL  
COMPLEX

**TOTAL AREA**  
45,000M<sup>2</sup>

**NUMBER  
OF UNITS**  
11

**DATE OF  
COMPLETION**  
MAY 1996



SUCCESSFUL BUSINESS, LIKE LIFE, IS A SERIES OF CONCENTRIC CIRCLES. YOU START IN THE MIDDLE AND KEEP MOVING OUT, INTERCONNECTING CIRCLE AFTER INTERCONNECTING CIRCLE, EXPANDING YOUR WORLD, YOUR VIEWS AND YOUR JOY.

**INVESTMENTS  
ABROAD**

drone video1

drone video2

## CEVAHIR SKY CITY

A huge architectural structure in Skopje, Macedonia which overlooks the city with a magnificent view of Vodno Mountain and the city. The project is the first of its kind in the Balkans.

Cevahir Sky City nests the tallest buildings in the Balkans: 4 towers with 40 floor and a shopping mall.



## MACEDONIA

### LOCATION

SKOPJE,  
MACEDONIA

### SCOPE

RESIDENTIAL TOWERS  
AND SHOPPING MALL  
COMPLEX

### TOTAL AREA

280,000M<sup>2</sup>

### NUMBER OF APARTMENTS

1376





**CEVAHIR MALL SKOPJE  
TO BE OPEN AUTUMN 2023**











**FUTURE PROJECTS**

**CEVAHİR**

## CEVAHIR SUN CITY

Located on Vodno Mountain, covering a total area of 835,000m<sup>2</sup>, this project will be carried out over a number of phases.

The first phase will be the first of its kind in Macedonia and will consist of detached and semidetached houses, villas, duplexes and apartment blocks providing a total residential development of 25,000m<sup>2</sup>.



**MACEDONIA**

**LOCATION**  
SKOPJE,  
MACEDONIA

**SCOPE**  
NEW SUBURBAN  
AREA

**TOTAL AREA**  
25,000M<sup>2</sup>

**NUMBER OF  
UNITS**  
151

**CONSTRUCTION  
COMMENCE**  
PENDING









## PHASE 1 PLAN

**SCOPE**  
NEW SUBURBAN  
AREA

**TOTAL  
CONSTRUCTION  
AREA**  
25,000M2

**NUMBER OF  
UNITS**  
151

**CEVAHIR DAMAN  
MALL BENGHAZI**



**LIBYA**

**LOCATION**  
BENGHAZI,  
LIBYA

**SCOPE**  
SHOPPING MALL

**TOTAL AREA**  
100,000M2

**STATUS**  
PENDING

# CEVAHİR DAMAN







IT IS NOT THE BEAUTY OF A BUILDING, BUT THE CONSTRUCTION  
OF THE FOUNDATION THAT WILL STAND THE TEST OF TIME

**CONTRACTING  
IN TURKEY**

drone video

## ISTANBUL INTERNATIONAL BUS TERMINAL

A terminal building with a capacity of 1 million passengers, this bus terminal was the largest bus terminal in Europe and the third largest in the world at the time of its completion.

The terminal is situated in the Bayrampaşa district and has 324 platforms with 500 permanent parking lots, more than 1,000 temporary parking lots as well as many offices, retail units and temporary accommodation units.



**LOCATION**  
BAYRAMPAŞA,  
ISTANBUL

**SCOPE**  
INTERNATIONAL  
BUS TERMINAL

**TOTAL AREA**  
320,000M2

**NUMBER OF  
PLATFORMS**  
324

**DATE OF  
COMPLETION**  
JUNE 1996







## CERRAHPAŞA MEDICAL FACULTY

Cerrahpaşa Medical Faculty is one of Turkey's most respected and well known medical centers.

The faculty has an open area of 120,000m<sup>2</sup> and a closed area of 210,000m<sup>2</sup> including 20 separate buildings facilitating the deanship, auditorium, dining hall, gymnasium, central library, basic sciences, polyclinic and accident & emergency.

The facility also accommodates various departments including Orthopedic, Neurosurgery, Infantile Disease, Gynecology, Gynecological Oncology, Neurology Physical Therapy, Nurse lodging, Radiation Oncology, Psychiatry, Health Service Vocational high school, Medicine Museum and Pulmonary Diseases.



**LOCATION**  
CERRAHPAŞA,  
ISTANBUL

**SCOPE**  
MEDICAL FACULTY

**TOTAL AREA**  
210,000M<sup>2</sup>

**DATE OF  
COMPLETION**  
DECEMBER 1994



## **ERCİS SUGAR PLANT**

110,000m<sup>2</sup> complex located in the eastern region of Turkey, Van; which consists of social facilities, housing, roads and the factory itself.

**LOCATION**  
ERCİS, VAN

**SCOPE**  
SUGAR REFINERY  
COMPLEX

**TOTAL AREA**  
110,000m<sup>2</sup>

**DATE OF  
COMPLETION**  
JUNE 1991





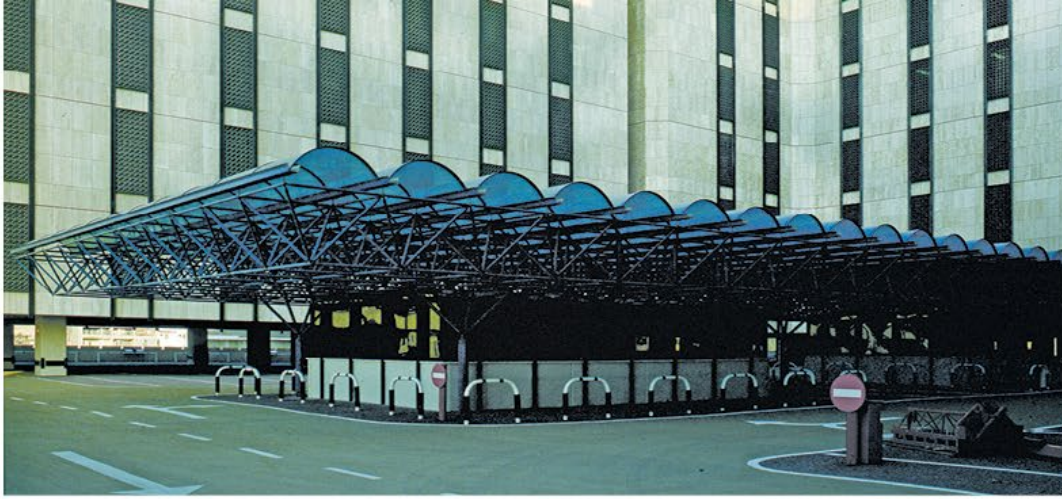
GO AHEAD AND WORK ON YOUR GOALS, YOUR GOALS WILL GO TO WORK ON YOU. WHATEVER GOOD THINGS WE BUILD, THEY END UP BUILDING US.

**CONTRACTING  
ABROAD**

## JEDDAH CORNICHE COMMERCIAL CENTER

The Jeddah Corniche Commercial Center was Jeddah's first and largest shopping and commercial center at completion, becoming a popular place to visit for locals as well as expatriates.

This mixed-use development was once a symbol of Turkish construction in Saudi Arabia.



**LOCATION**  
JEDDAH, SAUDI  
ARABIA

**SCOPE**  
RETAIL AND  
OFFICES

**TOTAL AREA**  
91,000m<sup>2</sup>

**DATE OF  
COMPLETION**  
APRIL 1984



CORNICHE COMMERCIAL CENTER

مرکز الكورنيش التجاري

JEDDAH / SARABA

RIO - CEVAHIR

ISTANBUL / TURKEY

## **ABBAR & ZAINY OFFICE BUILDING**

The Abbar & Zainy office building was developed as a modern structure located in the coastal city of Jeddah, Saudi Arabia with a total floor area of 8,130m<sup>2</sup>.



**LOCATION**  
JEDDAH,  
SAUDI ARABIA

**SCOPE**  
OFFICE

**TOTAL AREA**  
8,130m<sup>2</sup>

**DATE OF  
COMPLETION**  
SEPTEMBER 1984



Abbar & Zaidy

اببار و زیدی



## MUSLIM WORLD LEAGUE COMPLEX

The Muslim World League Complex comprises the Headquarters, Library and Mosque with a total construction area of 90,000 m<sup>2</sup>.



**LOCATION**  
MECCA,  
SAUDI ARABIA

**SCOPE**  
COMPLEX

**TOTAL AREA**  
90,000 m<sup>2</sup>

**DATE OF  
COMPLETION**  
1989

## H.R.H PRINCE METEIB BIN ABDULAZIZ PALACE COMPLEX

The residential complex is located in the Saudi Arabian capital city, Riyadh. The 5,000m<sup>2</sup> residence consists of 5 buildings and is complemented with an open area of 25,000m<sup>2</sup>.

The Sharbatly Commercial Building consists of 2 units providing a total area of 15,000m<sup>2</sup>.



**LOCATION**  
TAIF,  
SAUDI ARABIA

**SCOPE**  
PALACE COMPLEX

**TOTAL AREA**  
33,500m<sup>2</sup>

**DATE OF  
COMPLETION**  
DECEMBER 1984





## H.R.H PRINCE METEIB BIN ABDULAZIZ PALACE COMPLEX

A palace complex, located in the historic city of Taif on 250 acres of land. It is 1,600 meters above sea level and includes an assembly building, a guesthouse, a mosque, a semi olympic swimming pool and a water reservoir with a 500 ton capacity.



**LOCATION**  
RIYADH,  
SAUDI ARABIA

**SCOPE**  
H.R.H'S  
RESIDENTIAL COMPLEX

**TOTAL AREA**  
30,000m<sup>2</sup>

**NUMBER OF UNITS**  
5

**DATE OF  
COMPLETION**  
DECEMBER 1985

**LOCATION**  
JEDDAH,  
SAUDI ARABIA

**SCOPE**  
COMMERCIAL CENTER

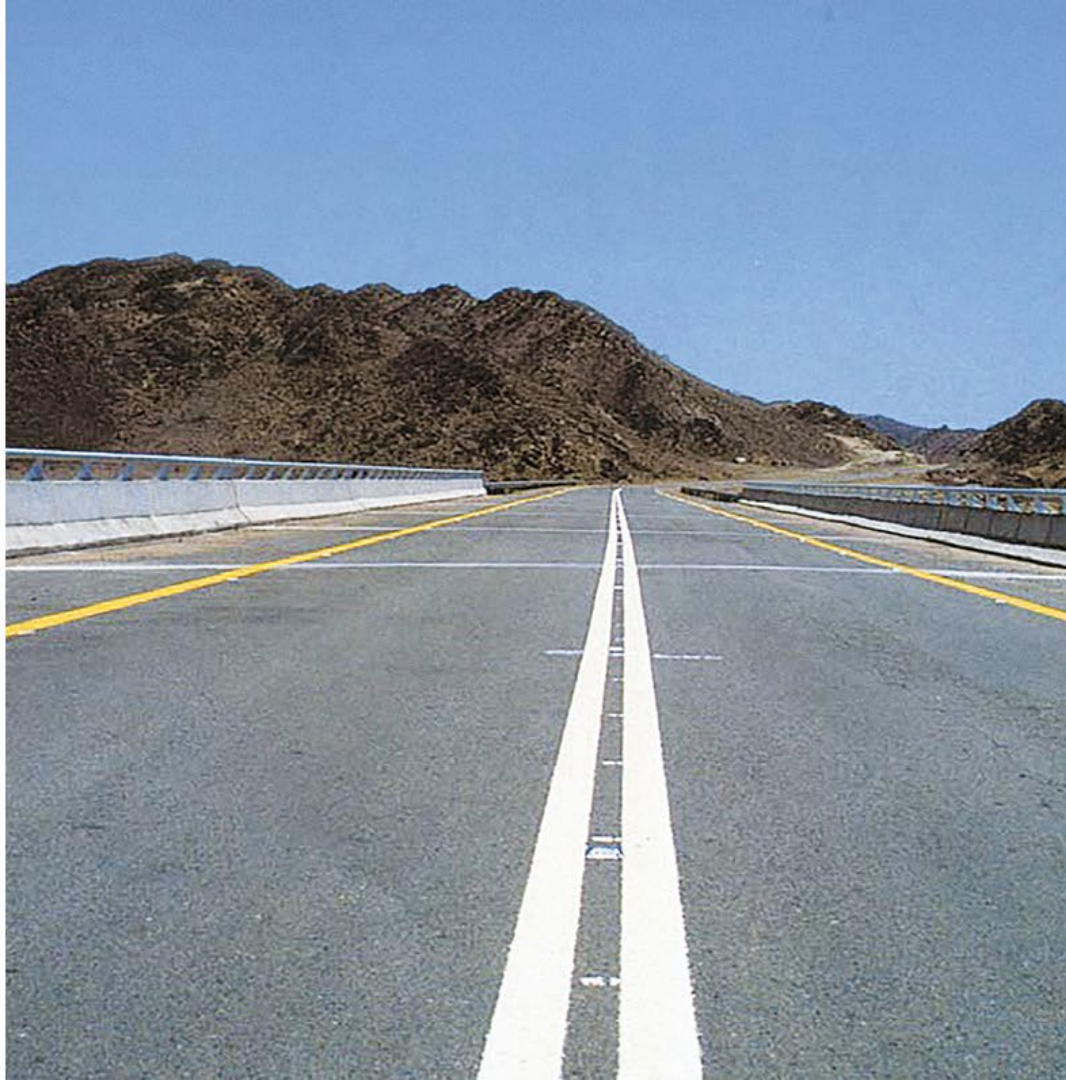
**TOTAL AREA**  
15,000m<sup>2</sup>

**NUMBER OF UNITS**  
2

**DATE OF  
COMPLETION**  
OCTOBER 1985



**HADASHAM  
MADRAKA  
ROAD**



**LOCATION**

JUMUM,  
SAUDI ARABIA

**SCOPE**

25 BRIDGES, 260  
CULVERTS AND 8  
RETAINING WALLS

**TOTAL LENGTH**

85km

**DATE OF  
COMPLETION**

FEBRUARY 1984

**KING  
ABDULAZIZ  
UNIVERSITY**



**LOCATION**  
JEDDAH  
AND MEDINA,  
SAUDI ARABIA

**SCOPE**  
UNIVERSITY

**TOTAL AREA**  
18,500m<sup>2</sup>

**NUMBER OF  
UNITS**  
4

**DATE OF  
COMPLETION**  
DECEMBER 1985





**MAKKAH  
SCHOOLS,  
WATER TANKS  
AND UMBRELLAS**



**LOCATION**  
MAKKAH,  
SAUDI ARABIA

**SCOPE**  
SCHOOLS,  
WATER TANKS  
AND UMBRELLAS

**TOTAL AREA**  
11,100m<sup>2</sup>

**NUMBER OF  
UNITS**  
3

**DATE OF  
COMPLETION**  
SEPTEMBER 1984



## AL KIYSH HOUSING PROJECT

Built in the early 1980's, this was the largest housing project in the Libyan coastal city of Benghazi. The project consists of 752 residential apartments, providing a total area of 105,000m<sup>2</sup>.



**LOCATION**  
BENHAZI, LIBYA

**SCOPE**  
HOUSING  
PROJECT AND  
INFRASTRUCTURE

**TOTAL AREA**  
105,000m<sup>2</sup>

**NUMBER OF  
APARTMENTS**  
752

**DATE OF  
COMPLETION**  
OCTOBER 1982



## **NATIONAL COMMERCIAL BANK OF ZAWIA, HEADQUARTERS BUILDING**

Constructed in the Libyan City of Zawia, this building provided the National Commercial Bank a modern office space of 7,214m<sup>2</sup>.



**LOCATION**  
ZAWIA, LIBYA

**SCOPE**  
OFFICE

**TOTAL AREA**  
7,214m<sup>2</sup>

**NUMBER OF  
UNITS**  
14

**DATE OF  
COMPLETION**  
OCTOBER 1986



LİBKO TURK  
CONSTRUCTION CO.

**BENGAZI  
BOARDING  
SCHOOL**



**LOCATION**  
BENGAZI, LIBYA

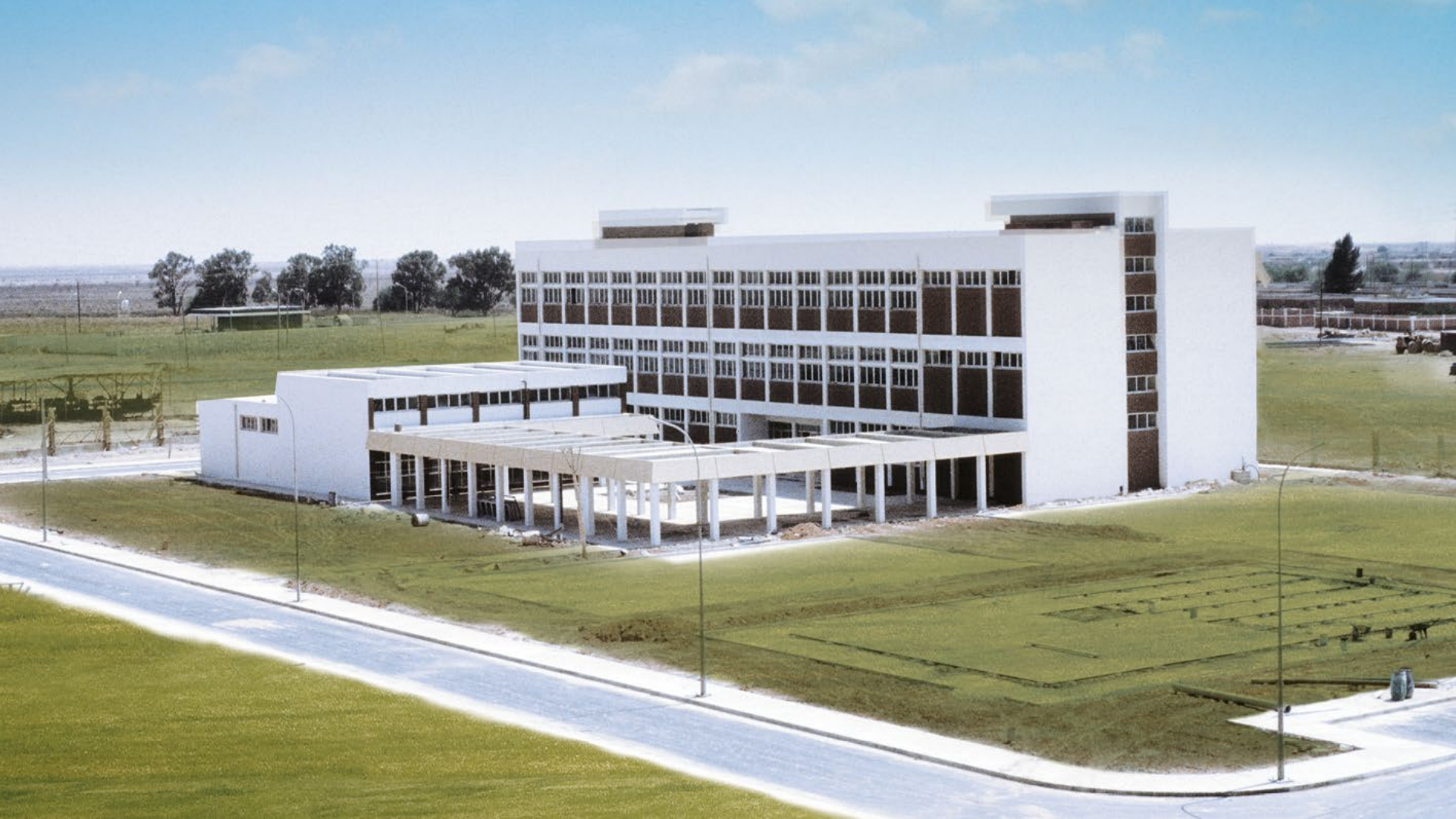
**SCOPE**  
BOARDING  
SCHOOL

**TOTAL AREA**  
28,200m<sup>2</sup>

**NUMBER OF  
UNITS**  
14

**DATE OF  
COMPLETION**  
JUNE 1984





**SURMAN  
INSTITUTION OF  
ELECTRICAL  
ENGINEERING**



**LOCATION**  
TRIPOLI, LIBYA

**SCOPE**  
BUILDING AND  
INFRASTRUCTURE

**TOTAL AREA**  
22,000m<sup>2</sup>

**NUMBER OF  
UNITS**  
20

**DATE OF  
COMPLETION**  
DECEMBER 1983



THE GREATEST TREASURES OF MOTHER EARTH ARE ABOVE,  
UNDER AND IN FRONT OF US. WE JUST NEED TO UTILISE THEM  
WELL.

**MINING**

## CEVAHIRLER MINING

Cevahir began operations in the mining sector in 2014 by supplying international markets with perlite from its privately owned mining sites with up to 25 million tons of reserves.

Perlite is a volcanic glassy rock which is used for varying purposes including construction, farming, agriculture, chemical substance carriage, filtration and more.

As well as a crushing and screening facility, Cevahirler Mining also operates its own expansion plant.



**LOCATION**  
TURKEY

**SCOPE**  
MINING  
FACILITY

**START OF  
OPERATIONS**  
MAY 2014



A person is shown in profile, sitting at a desk in a control room. They are looking at several computer monitors that display various data and maps. The entire scene is overlaid with a semi-transparent red filter. The person is wearing a light-colored, short-sleeved shirt. The desk has a keyboard and other control devices. The background shows more monitors and equipment racks.

**WE ALL RUN IN HOPE OF FINDING  
SOME SECURE GROUND**

**SECURITY**

## CEVAHIR PRIVATE SECURITY

In November 2009, Cevahir Private Security was formed to provide customers high quality security services.

Since the beginning of operations, the company has continued to grow in this sector, by closely following the new advancements in technology, providing customers meaningful feedbacks and maintaining a high level of service quality.



**LOCATION**  
TURKEY

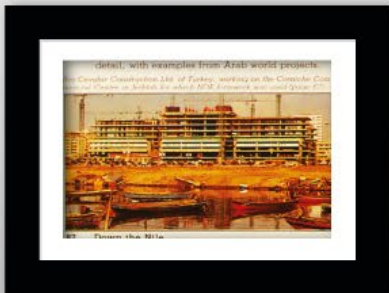
**SCOPE**  
SECURITY

**START OF OPERATIONS**  
NOVEMBER  
2009









**MUSIAD**



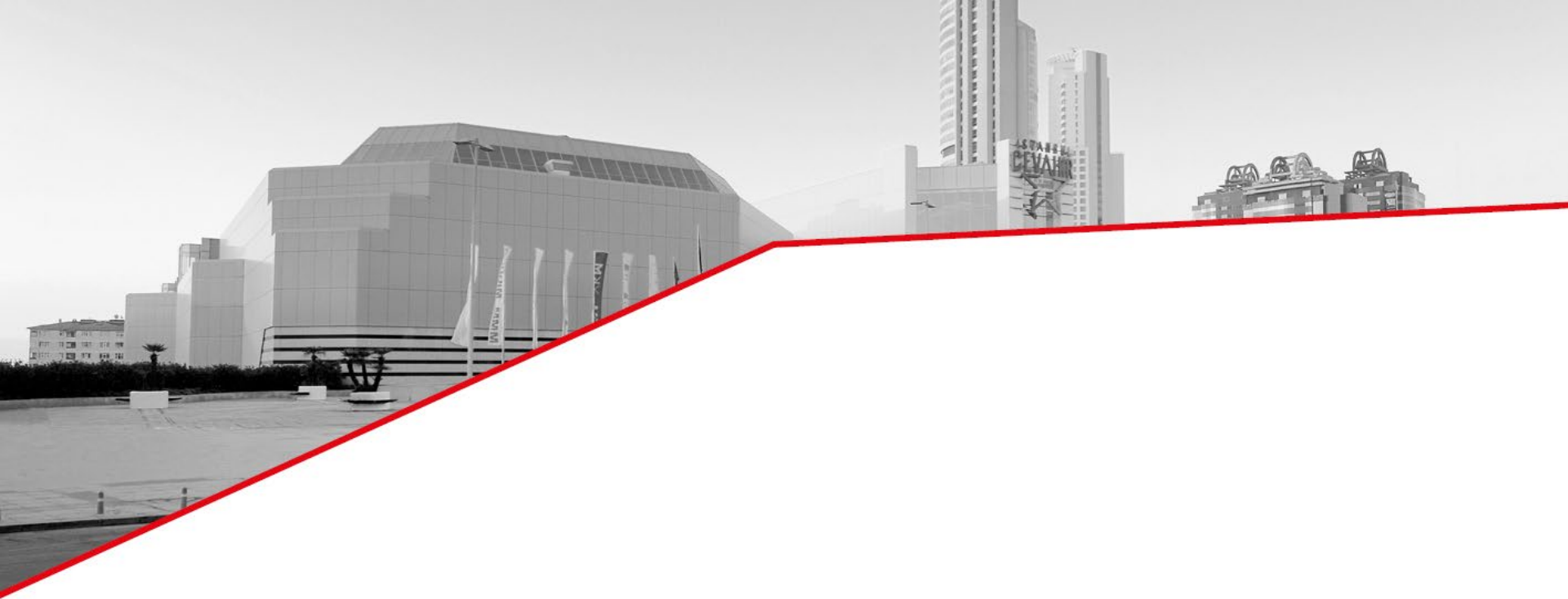
**İSTANBUL  
TİCARET  
ODASI 1882**



**İSTANBUL TİCARET  
ÜNİVERSİTESİ**



**MEMBERSHIPS & CSR**



## ISTANBUL

Tel: +90 (212) 320 86 76  
Fax: +90 (212) 320 75 30  
Address: Darülaceze Caddesi No: 29  
34384 Okmeydanı - Sisli İstanbul, Türkiye  
E-Mail: [info@cevahir.com.tr](mailto:info@cevahir.com.tr)  
Web: [www.cevahir.com.tr](http://www.cevahir.com.tr)

## TRABZON

Tel: +90 (462) 341 15 63  
Fax: +90 (462) 341 15 65  
Address: Kaşüstü Mahallesi  
Devlet Karayolu Cad. No. 19 Yomra - Trabzon, Türkiye  
E-Mail: [info@trabzoncevahir.com.tr](mailto:info@trabzoncevahir.com.tr)  
Web: [www.trabzoncevahir.com.tr](http://www.trabzoncevahir.com.tr)

## IZMIR

Tel: +90 (232) 669 11 10  
Fax: +90 (232) 669 11 20  
Address: Tavukçukuru Köyü Mevki 101  
Ada 39, Parsel Bergama - İzmir, Türkiye  
E-Mail: [info@cevahirperlite.com.tr](mailto:info@cevahirperlite.com.tr)  
Web: [www.cevahirperlite.com.tr](http://www.cevahirperlite.com.tr)

## SKOPJE

Tel: +389 (2) 244 40 18  
Fax: +389 (2) 321 32 31  
Address: Blvd. Srbija 31A (Municipality Aerodrom)  
(P.O. 711), 1000 Skopje, North Macedonia  
E-Mail: [sales@cevahirskycity.mk](mailto:sales@cevahirskycity.mk)  
Web: [www.cevahirskycity.mk](http://www.cevahirskycity.mk)